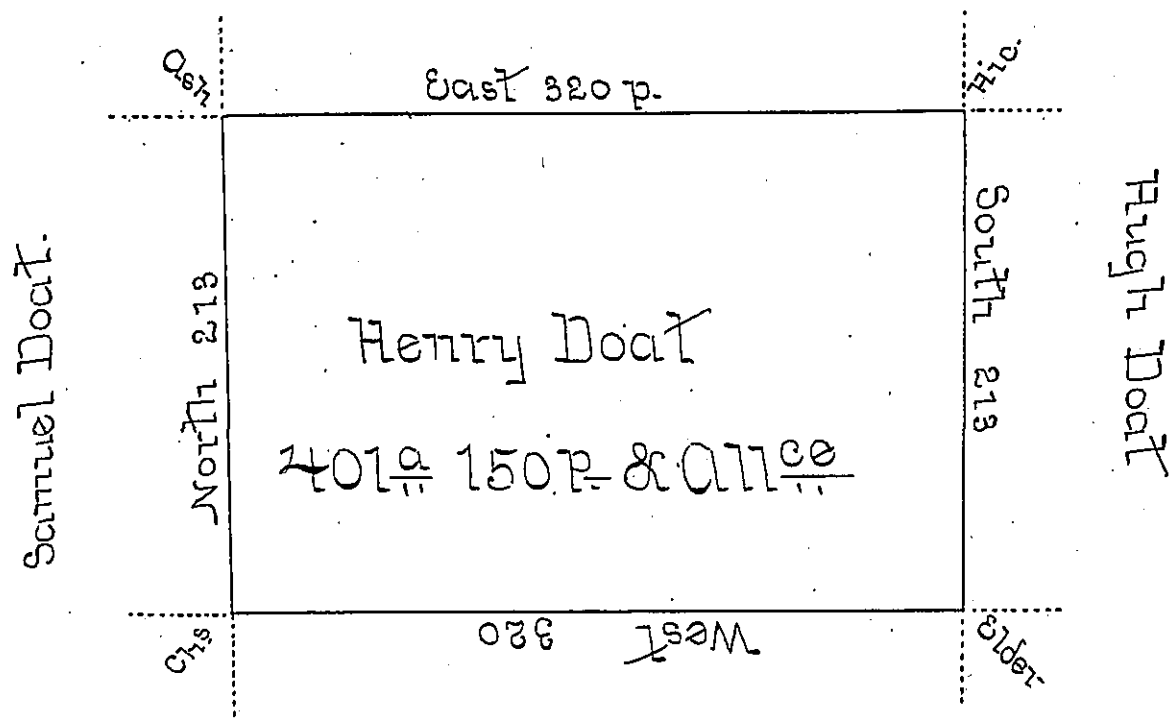


Titus Doat



Thomas Robeson

Situate on the East Side of French Creek in Allegheny County containing 401 1/2 and 150 P and Allowance of Six P Cent. for Roads &c Surveyed the 15th day of June 1794 in Pursuance of a Warrant dated the 10th day of April 1793

To Dan^l Brodhead Esq^r }
 Surveyor General } W^m Power D^H SE

IN TESTIMONY that the above is a copy of the original remaining on file in the Department of Internal Affairs of Pennsylvania, made conformably to an Act of Assembly approved the 16th day of February, 1833, I have hereunto set my Hand and caused the Seal of said Department to be affixed at Harrisburg, this

sixth day of April 1897.

James W. Latta
 Secretary of Internal Affairs.